



LEWIS TURNBULL

CONTRACTS MANAGER

Lewis is a reliable Contracts Manager with extensive experience in civil engineering projects across central London, including Bond Street Crossrail (£35M), Park Modern (£16M), and Woolwich Arsenal (£6M).

He joined Downwell in March 2023 and currently leads the demolition of Compass School, a complex project requiring careful coordination.

Lewis brings a hands-on approach, strong communication skills, and expertise in RC works, temporary works, groundworks, and drainage, making him a trusted leader in both construction and demolition.

QUALIFICATIONS

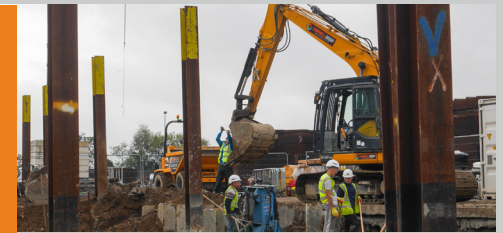
- ▶ HNC Civil Engineering
- ▶ IOSH Leading Safety
- ▶ SMSTS
- ▶ Temporary Works Supervisor

COMPETENCIES

- ▶ Excellent communication and leadership skills, with the ability to manage teams and liaise effectively with all stakeholders
- ▶ Proactive approach to problem solving, with a focus on practical and timely solutions
- ▶ Proven experience in managing complex projects, including asbestos removal and coordination of temporary works
- ▶ Proficient in the use of all Microsoft Office packages, including Word, Excel, Outlook, and Project
- ▶ Strong sub-contractor management skills, ensuring quality, safety, and programme adherence across all site activities

RESPONSIBILITIES

- ▶ Full resource management, including planning and coordination of labour, plant, and materials
- ▶ Project programming from pre-construction through to completion, ensuring key deadlines are met
- ▶ Preparation and ongoing review of temporary works briefs throughout the project lifecycle
- ▶ Budget management with forecasting of resources and plant to maintain financial control
- ▶ Production of RAMS, DEMP, and CPP documentation to ensure compliance and site safety
- ▶ Liaison with sub-contractor management and site supervisors to oversee the delivery of sub-contracted works, ensuring quality and programme adherence



Avocet Crane Remedials (£4.9m): Removal of steel crane gantry, installation of piled foundations and floor slab with drainage, then construction of new steel gantry frame.



Bermondsey Campus (£2.95m): Demolition and ground remediation of school buildings, sports hall, and studios were completed in two phases to enable redevelopment into residential, commercial, retail, and public spaces.



65 Crutched Friars (£820k): Downwell Enabling's first project for McAleer & Rushe involved substructure breakout and pile enablement works near Fenchurch Street station in the City of London.