



SHANE FOUNTAIN

HEAD OF HEALTH AND SAFETY

Shane is a dedicated Health and Safety professional who joined Downwell in 2020 and now works as SHEQ Manager. With industry experience since 2014, he brings hands-on knowledge from roles in demolition, groundworks, and civils across London and the South-East. His background includes high- and low-rise demolition, asbestos removal, temporary works, and complex groundwork operations.

Highly organised and approachable, Shane uses his site-based experience to implement effective safety strategies, support team development, and drive continuous improvement in health, safety, and compliance.

QUALIFICATIONS

- ▶ NEBOSH Construction
- ▶ IOSH Managing Safety
- ▶ Mental Health First Aid
- ▶ SEATS
- ▶ CPCS Excavator 360
- ▶ Fire Marshall
- ▶ CPCS Skid Steer Loader
- ▶ CPCS Signaller/Slinger
- ▶ Demolition Manager Course
- ▶ Demolition and Asbestos Awareness Course
- ▶ IEMA Associate Member
- ▶ IOSH Memeber
- ▶ IDE Member

COMPETENCIES

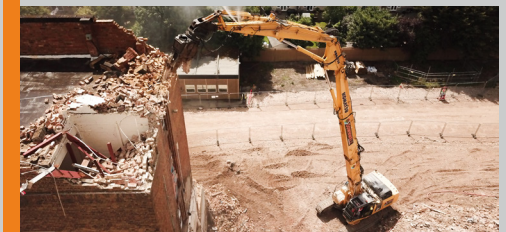
- ▶ **Site Audits & Safety Reporting**
Carrying out audits and producing reports to ensure compliance with health and safety legislation and best practices.
- ▶ **Training & Compliance Management**
Managing and delivering statutory and role-specific training to maintain workforce competency.
- ▶ **Health & Safety Advice**
Providing guidance across the business, including face fit testing in line with HSE requirements.
- ▶ **Risk Assessments & Documentation**
Preparing and reviewing risk assessments, method statements, and safety documents.
- ▶ **On-Site Safety Leadership**
Leading safety practices on-site, including inspections and incident investigations.
- ▶ **Reporting to Management**
Reporting health and safety performance and compliance directly to the Managing Director.

RESPONSIBILITIES

- ▶ Effective communicator and strong leader, with experience managing teams and promoting collaboration across all levels.
- ▶ Highly organised and proactive, able to prioritise tasks and streamline operations for efficient project delivery.
- ▶ Good knowledge of compliance and current HSE legislation, ensuring all work meets legal and industry standards.
- ▶ Skilled in team and relationship management, with a focus on stakeholder engagement and positive working environments.
- ▶ Sound understanding of construction and demolition processes, including safety procedures and environmental factors.
- ▶ Proven experience in complex demolition projects, managing high-risk sites with a focus on safety and compliance.



HMP Holloway (£3.7m): The former estate, with buildings from two to five storeys, underwent full demolition including asbestos removal and slab clearance. Materials were crushed for reuse in later project phases.



Richmond College (£1.2m): Demolition of redundant college buildings for residential redevelopment, with close liaison to minimise neighbour disruption. Early works prioritise strong community engagement.



Benenden Hospital (£730k): The former hospital's buildings were demolished, including asbestos removal and slab clearance. Materials were crushed for reuse in later development.